

NSW releases Cruise Development Plan

THE NSW Government has plotted the state's cruise future - without a terminal at Garden Island and instead scoping a new passenger facility outside of Sydney Harbour, at Botany Bay.

The long-awaited Cruise Development Plan (**CW** breaking news Sun) has been developed in partnership with the industry-led Cruise Industry Reference Group, which had strongly urged consideration of a Garden Island West cruise terminal, along with the permanent relocation of Navy vessels to the eastern side of the existing naval facility.

However "a future terminal at Garden Island will not be considered, following advice from the Commonwealth Government," according to NSW Minister for Roads, Maritime and Freight, Melinda Pavey.

Key actions envisaged under the plan include preparation of a



strategic business case to assess the viability of two potential sites for a new third Sydney cruise berth location, at either Yarra Bay or Molineaux Point, both of which are inside Botany Bay.

Options for a booking system for the Overseas Passenger Terminal are to be explored in order to maximise the number of passengers, while authorities will also continue to optimise the use of berths at White Bay.

Improved transport connections

for the existing terminals are to be investigated, along with funding options for infrastructure to support cruise ships at current and potential regional ports.

The government will also look at opportunities to remove regulatory barriers for the expedition cruise market.

CLIA Australasia chairman Sture Myrmell welcomed the report, saying "Having a clear plan of action...is a step forward to achieve greater certainty".

Cruise Weekly today

CRUISE Weekly today features four pages of all the latest cruise industry news.

Aurora joins CLIA in UK/Ireland

AURORA Expeditions is looking to boost its presence in the UK, Ireland and across Europe by expanding its participation in Cruise Lines International Association.

The move was welcomed by CLIA UK senior vice president of membership, Andy Harmer.

Aurora will next year debut its newbuild *Greg Mortimer* polar expedition vessel, with Harmer saying "the expedition sector is one of the most dynamic elements of the global cruise industry and the addition of Aurora's expertise in this arena is great news for CLIA travel agents".

OCEANIA CRUISES®

INTRODUCING

THE OCEANIA CRUISES EXPERT WEBINAR SERIES



GRAND VOYAGES – 2 AUGUST 2018: [CLICK HERE TO REGISTER NOW](#)

CRUISE



Tuesday 31st July 2018

CroisiEurope 2019

CROISIEUROPE is offering 170 itineraries aboard more than 50 ships in its 2019 worldwide program.

Among the new additions are Douro river cruises aboard the *MS Amalia Rodrigues* which launches next year.

New itineraries include a three-night Paris cruise, a five-night Seine cruise from Paris to Rouen, a five-night cruise from Amsterdam on Lake IJsselmeer and a six-night multi-river cruise taking in France, Germany and Luxembourg.

See www.croisieurope.com.

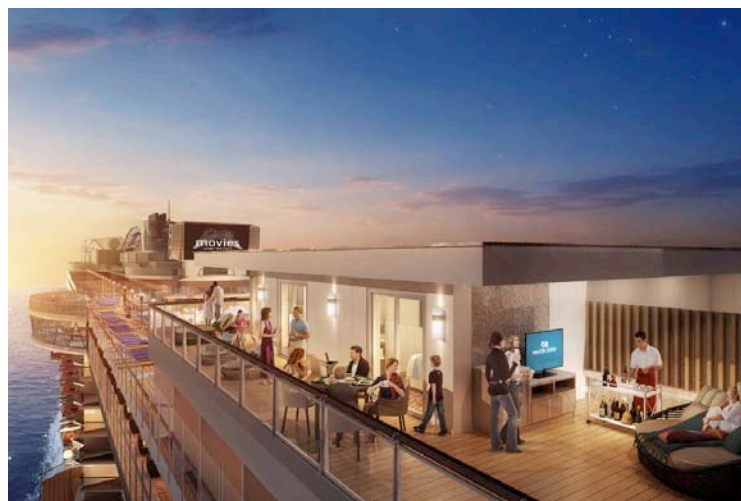
NCL reduces plastic

NORWEGIAN Cruise Line (NCL) has announced plans to reduce the number of single-use plastic straws across its fleet of 26 ships and two island destinations.

The company's Great Stirrup Cay and Harvest Caye islands will eliminate single use plastic straws entirely from next month, and NCL will aim to reduce its usage of plastic straws across its fleet by more than 50 million each year.

The move will build on the cruise line's "Sail & Sustain" environmental program.

Sky Suite sneak peak



PRINCESS Cruises has provided a first glimpse of its planned Sky Suites ahead of their introduction on the new *Sky Princess*, set to make its debut in Oct.

The two suites will take prime position on the ship's top decks and have the largest balconies ever created by Princess Cruises, at 65m² each, **pictured**.

The suites will cater for up to five guests and provide 270-degree views, including a private vantage point for the ship's outdoor movies.

"Our two new Sky Suites reflect Princess Cruises' continued commitment to offer new and expansive accommodations that meet the needs of our guests

who wish to explore the world in ultimate comfort," said Princess president Jan Swartz.

Sky Princess will operate its maiden season in the Mediterranean and will be fitted with many of the features of its sister ships, *Royal*, *Regal* and *Majestic Princess*.

New features being introduced for *Sky Princess* include a Wakeview pool on the aft deck, two new "deep-tank" pools on the top deck and a "restorative" Retreat Pool.

Sky Princess will also offer more Jacuzzis than previous Royal-Class ships including two cantilevered over the deep-tank pools.

CLICK HERE for more details.

Travel Daily & CRUISE WEEKLY
present

CRYSTAL CRUISES WEBINAR SERIES

WEBINAR 2 LAUNCHES 8 AUGUST

Register and tune in for your chance to win a luxury cruise.



CRYSTAL
RIVER CRUISES™

LUXURY ASIA PACKAGES

All inclusive offer from **\$7,200*pp**
Upgrade to Business Class for **\$999*pp** each way



SILVERSEA

Creative
Cruising

EXCLUSIVE



+EARN \$100 GIFT CARD FOR EVERY BOOKING!*

Book by 31 August 2018 *Conditions Apply

BOOK



Win a Google Home Mini or EVENT cinema tickets

Have your say in the industry's biggest salary & employment survey

Click here to take part

Scenic SE Asia brox

SCENIC has announced the release of its 2019/2020 South East Asia brochure which features an extended cruising program through Vietnam, Cambodia & Myanmar on board the vessels *Scenic Aura* and *Scenic Spirit*.

The list of sailings includes the 13-day Treasures of the Mekong cruise, departing from Ho Chi Minh City and heading to Siem Reap, priced from \$7,495 per person.

Both ships boast exclusive Scenic Slumber beds on board, as well as a sauna and steam room.

The company also has a range of earlybird deals in place until 31 Oct, such as a free upgrade when bookings are made on any Sapphire Deck suite, a saving of up to \$800 per couple.

Royal Insta' star push



ROYAL Caribbean International has partnered with Australian comic Celeste Barber to create an online series in which the Instagram star attempts to recreate the line's on board experiences in her backyard.

The #cruisechallengeaccepted series sees Barber mimic Royal features like RipCord by iFLY skydiving (pictured above), FloRider surfing (inset) and the robotic Bionic Bar.

"I worked out pretty quickly that trying to do all these activities on land with my family was

completely exhausting and was going to leave me broke so the idea of doing them all on a fancy cruise with a glass of wine nearby was more appealing," Barber said. **CLICK HERE** for a taste.

HLO Cruise Stars to Alaska with Crystal

HELLOWORLD Travel has announced a makeover of its Global Stars incentive program, with 2019 seeing a separate scheme to reward top sellers of its Seven Oceans, The Cruise Team and NZ-based GO Holidays cruise product.

The 2019 Cruise Stars will be rewarded with a seven day Alaskan cruise aboard Crystal Cruises' *Crystal Symphony*, while Global Stars (covering FIT brands Qantas Holidays, Viva! Holidays, Insider Journeys, Rail Tickets, ReadyRooms, Territory Discoveries and Sunlover Holidays) will head to Dubai in 2019.

The changes were unveiled on Hamilton Island last weekend during the 2018 Global Stars event by HLO executive director Cinzia Burnes.

Silversea wine trips

LUXURY cruise line Silversea Cruises has announced a range of wine cruises scheduled to depart in 2018 and 2019.

Trips include a sailing between Lisbon and Fort Lauderdale aboard the *Silver Whisper* between 18-31 Oct, a voyage run in partnership with Comitato Grandi Cru d'Italia and the American Fine Wine Competition that introduces passengers to both "old world" and "new world" wines.

Four more wine voyages are slated for 2019 such as Auckland to Sydney journey on the *Silver Muse* hosted by wine pundit Lawrence d'Almeida with tastings on board.

The 13-day cruise leaves Auckland 20 Jan and arrives in Sydney 02 Feb.

For more information on the wine cruises, **CLICK HERE**.

Polar bear killed

A **POLAR** bear has been shot dead after it attacked two guards from a Hapag Lloyd Cruises cruise ship on an Arctic archipelago.

The cruise line's *MS Bremen* landed on the most northern island of the Svalbard archipelago last Sat when the incident occurred, leaving one guard injured.

The guard was "attacked by a polar bear and injured on his head", leading to the bear being killed "in an act of self-defence," Hapag Lloyd Cruises head of communications Negar Etminan said in a statement.

Viking upgrade deal

VIKING Cruises has announced upgrade offers on three of its new Grand Voyages itineraries.

The special extends to its 32-day Islands of the South Pacific, 29-day Southern Australia to South Africa and 57-day Sydney to London via Africa, with all pax who book a Veranda stateroom to receive a free upgrade to a Deluxe Veranda stateroom when bookings are made by 31 Aug.

The deal represents a saving of up to \$7,200 per couple and will take place aboard the company's new *Viking Sun*.

For more info call 138 747.



Discover Hidden

MIDNIGHT SUN, BALTIC CAPITALS & ST PETERSBURG

FLY FREE in 2019 with our Grand Voyages*

*Conditions apply



DISCOVER MORE

Ignite appoints

IGNITE Travel Group has announced the appointment of Michael Middleton into the newly created role of general manager of cruise.

Middleton joins the group after spending eight years at Western Australia's Bicton Travel and previously he ran his own travel agency in New Zealand and held management roles at cruise agencies throughout the UK.

Middleton said he is delighted to be joining the innovators of travel at such a pivotal time for the business.

New cruise terminal for India

THE foundation for an International Cruise Terminal at the Ernakulam Wharf of Cochin Port in Kochi, Kerala has been put down by Alphons Kannanthanam, Union Minister of State for Tourism last weekend and is set for completion before Feb 2020.

The *New Indian Express* reported that the Ministry aims to attract five million cruise tourists into India by 2040 and that the new terminal has 2,253m² and will be equipped to handle up to 5,000 visitors.

Cruise Calendar

This week's port calls of cruise ships at various destinations around Australia and New Zealand.

SYDNEY
Carnival Spirit 02 Aug
Pacific Explorer 02 Aug
Carnival Spirit 06 Aug

BRISBANE
Pacific Dawn 31 Jul
Pacific Dawn 04 Aug
Carnival Spirit 04 Aug

CAIRNS
Pacific Eden 03 Aug

DARWIN
Coral Expeditions 1 02 Aug

AUCKLAND
Pacific Jewel 03 Aug
Pacific Jewel 06 Aug

Rail cruise double

THE newly released 2019 Great Rail Journeys brochure features around 30 rail adventures across four continents which can be combined with a range of river cruises and are eligible for Travelmarvel's Fly Free offer.

Great Rail Journeys' most popular tour is the nine-day Edinburgh, the Highlands and Islands, which includes rail travel aboard the Jacobite Steam Train also known as "The Harry Potter Express".

The new Spain and Morocco Adventure and the Bordeaux and Basque Country rail holidays can also be combined with a seven-night Douro River cruise through Portugal's Douro Valley and are eligible for 2 for 1 airfare deals when combined.

To view the brochure for all itineraries, [CLICK HERE](#).

MSC to triple capacity



A MASSIVE expansion program currently under way at MSC Cruises will provide significant opportunities for the travel trade, with the company's 10-year investment plan expected to see it carrying more than five million passengers annually by 2026.

The growth commitment was detailed by MSC Cruises md for Australia and NZ Lynne Clarke last week, who said the fast-growing privately-owned cruise line was currently simultaneously constructing *MSC Bellissima*, *MSC Grandiosa* and *MSC Virtuosa*.

Bellissima, which will launch in Mar 2019, has an innovative design which allows her to dock

at virtually any cruise port across the globe, and after an inaugural season in the Mediterranean will head to the Arabian Peninsula where MSC is boosting capacity by 40% year-on-year.

Grandiosa is the first of MSC's Meraviglia-Plus class of ships with capacity for 6,300 passengers.

She is set to debut in Nov next year, boosting Mediterranean summer capacity by 30%.

Virtuosa will launch in 2020 and a further seven ships are on order for delivery between 2021 and 2026, Clarke said.

She's pictured above centre with MSC marketing manager Leisa Chell and CLIA md Joel Katz.

Capt Cook says no to plastic

CAPTAIN Cook Cruises Fiji is eliminating single use plastic items on board small ship *MV Reef Endeavour*.

With plastic drinking straws no longer available on board, guests can opt for recyclable paper straws and instead of plastic cups use reusable cups.

The company will also recycle Vai Wai water bottles back to the supplier.

"We wanted to lead the way environmentally onboard," said Jackie Charlton, Captain Cook Cruises Fiji's md.



UNIWORLD Cruises had the *Cruise Weekly* team dreaming of a toasty, warm and white Christmas last week when a delicious basket of treats arrived at the office as part of its "Tis the season to plan a festive holiday" promo.

It was every man - and woman! - for themselves as staff dug into the array of cheese and crackers. Cheers!